

LOTTE

HOTELS & RESORTS

ST. PETERSBURG



EST. 1928

THE LEADING HOTELS
OF THE WORLD*

LOTTE HOTEL ST. PETERSBURG

LOTTE – QUALITY AND LUXURY WITH A PERSONAL TOUCH

LOTTE: LOVE – OPTION – TALANTS – TEAMWORK - EMOTIONS

LOVE – Love for guests, colleagues, partners and passion

OPTION – Any request of the guest or customer (a cup of coffee in a restaurant, business seminar, VIP banquet, reception of government delegations) will be elaborated and implemented at the highest professional level

TALANTS – selection of the most caring and talented employees who are passionate about the hospitality

TEAMWORK - flawless work of a united team that operates harmoniously and precisely as clockwork

EMOTIONS – the ability not only to listen to guests, but also anticipate their wishes for the most comfortable stay in Lotte.

The brand new LOTTE HOTEL ST. PETERSBURG

LOTTE
HOTELS & RESORTS



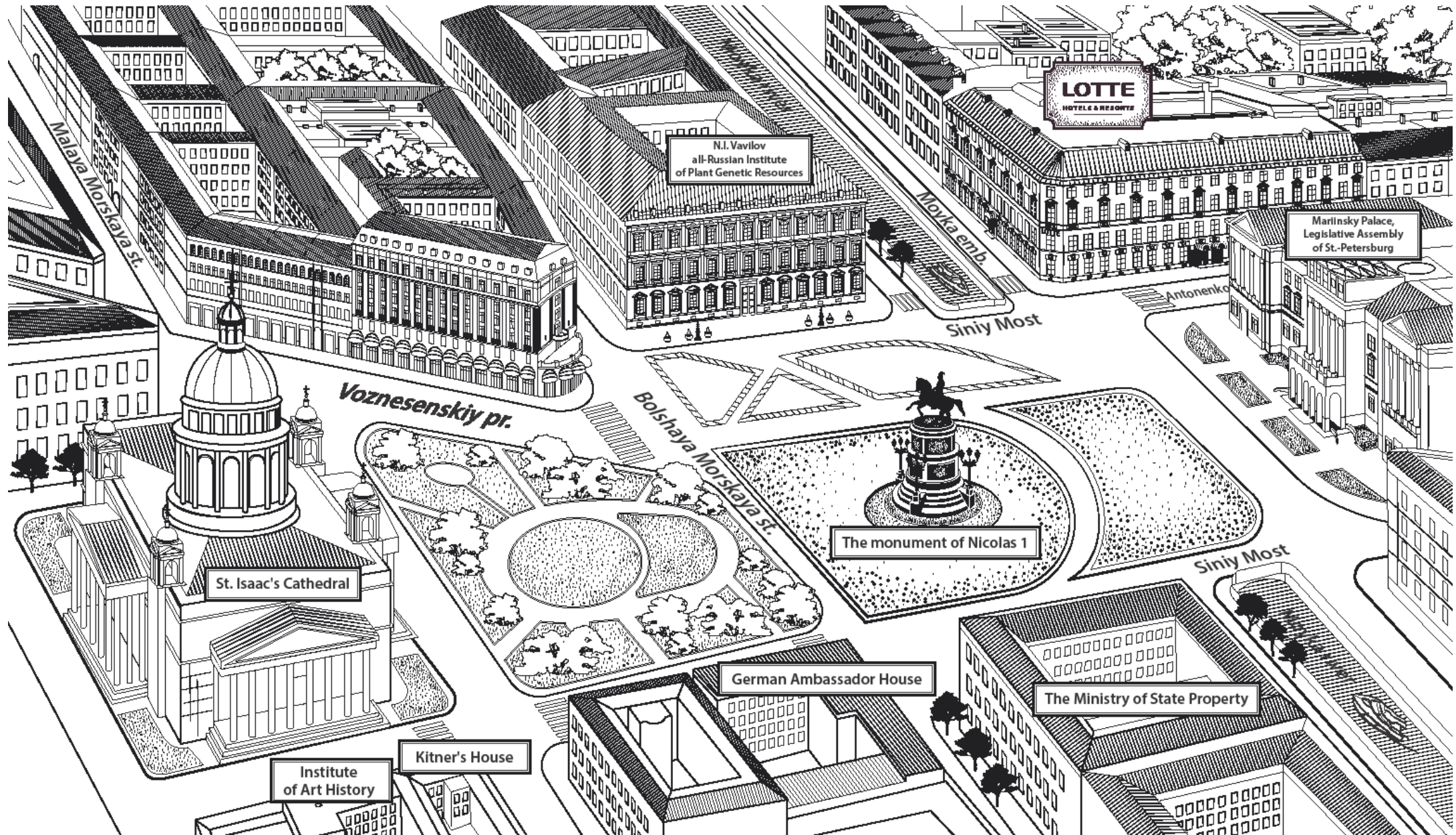
Located on St. Isaac square and overlooking St. Isaac's cathedral, the Moika river and the Blue Bridge the hotel is just a short walk from The Hermitage Museum, Nevsky prospect and Mariinsky theatre.

LOTTE HOTEL ST. PETERSBURG is a place of history. It occupies the mansion built in 1849 for the honorary citizen Maria Yakunchikova. In earlier times, the 1st US ambassador to Russia, John Quincy Adams, the 6th President of USA lived in this building in 1810-1811.

The hotel offers 150 guest rooms including 7 Suites, an impressive The Lounge restaurant with a stained-glass artwork, the premium Japanese MEGUMI restaurant, rooftop Bar L Terrasa with a breathtaking view of St. Isaac's square, 2 banquet halls, Balinese Mandara Spa with a wide range of Spa treatments ensuring sublime relaxation.

Pursuing the life balance LOTTE HOTEL ST. PETERSBURG has something for everyone travelling whether for business or leisure.

LOCATION



LOTTE HOTEL ST. PETERSBURG

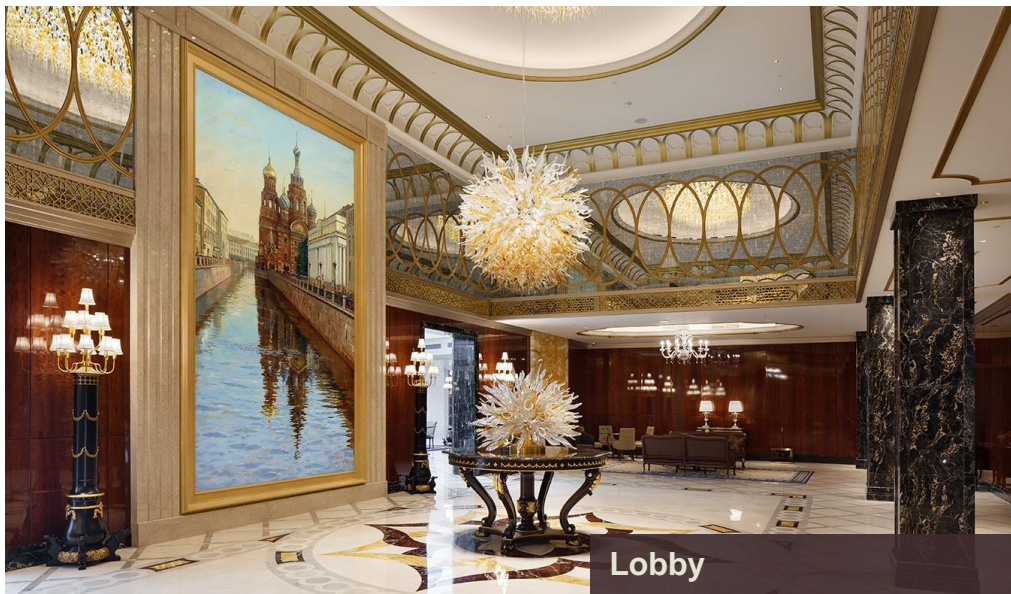
LOTTE
HOTELS & RESORTS



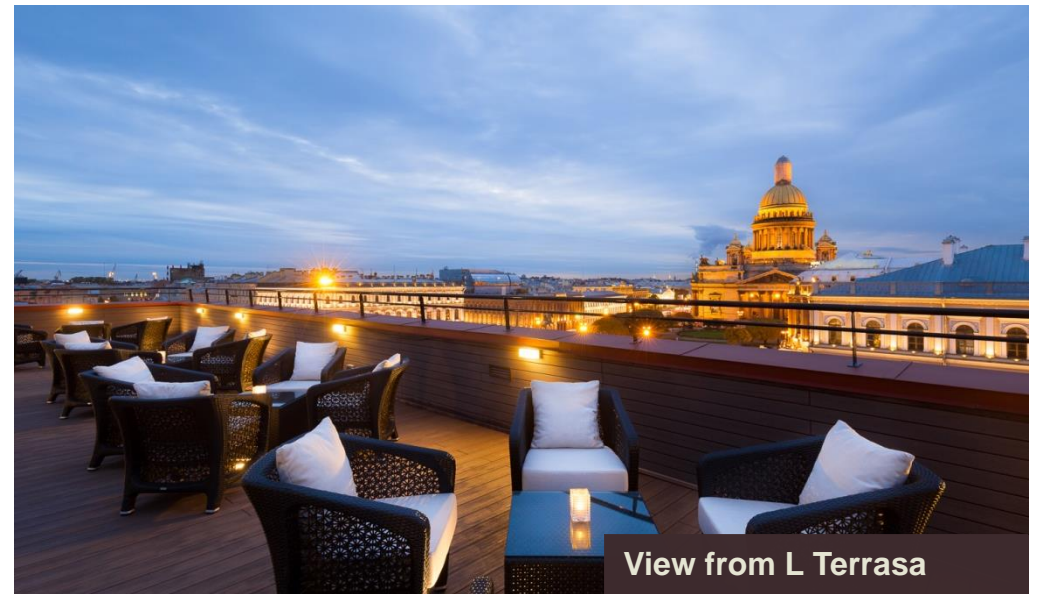
Facade



Memorial plaque

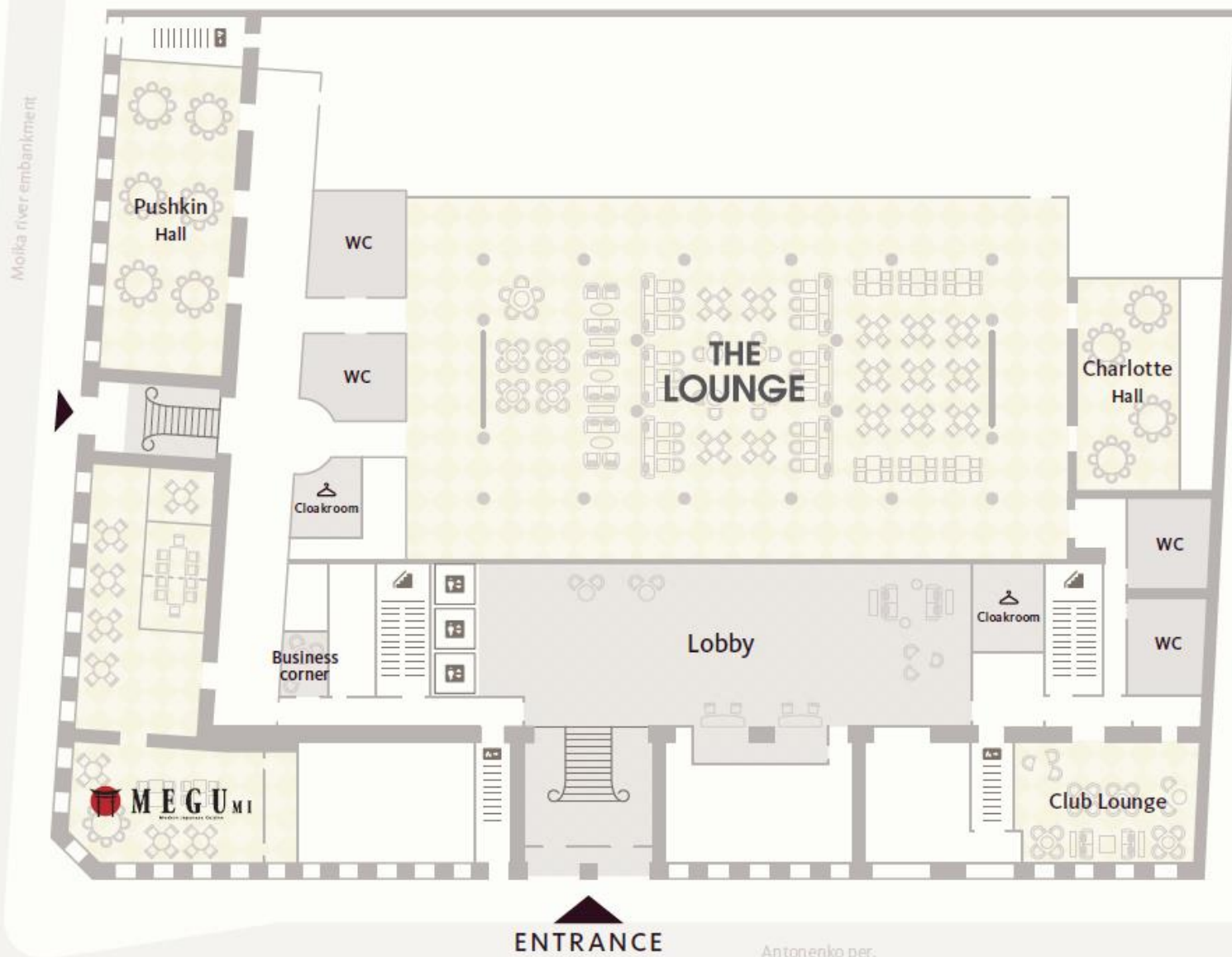


Lobby



View from L Terrasa

1st floor



The Lounge Restaurant-bar

Ceiling height: 3.5–8 m
Area: 855 m²

Pushkin Hall

Ceiling height: 3.5 m
Area: 117 m²

Charlotte Hall

Ceiling height: 3.5 m
Area: 75 m²

MEGUMI Japanese restaurant

Ceiling height: 3.5 m
Area: 190 m²

Club Lounge

Ceiling height: 3.5 m
Area: 65 m²

ENTRANCE

Antonenko per.

THE LOUNGE



Interesting design solutions were developed by a Japanese studio working in Los Angeles, Naoko Horii Design Concepts. Impressive restaurant totaling 852 sq.m. with a stained-glass artwork has been designed with a capacity of 170 seats to welcome guests for breakfasts, lunches and banquets.

Outstanding LOTTE breakfast



LOTTE breakfast was awarded as **BEST BREAKFAST IN A HOTEL IN EUROPE** by Prix Villégiature Awards.

The buffet menu at the Lotte Hotel in St. Petersburg includes more than 150 items.

The buffet includes a traditional European breakfast, which is complemented by thematic stations: "Russian table" and "Asian Corner".

For the preparation of dishes we use products of the highest quality, which were carefully selected and checked by the Chef.



Executive Chief – Anatoly Ivanov



The Executive Chef Anatoly Ivanov is a professional member of the Chaîne des Rôtisseurs - an International Association of Gastronomy bringing together enthusiasts who share the same values of quality, fine dining and the encouragement of the culinary arts.

Anatoly possesses over 25 years of progressive experience in fine dining having worked for several years in leading hotels in Germany, France and USA.

The gourmet menu of The Lounge restaurant carefully created by Anatoly embraces the finest dishes from around the world featuring the tastes of Mediterranean, Asian, Mexican, Russian and other cuisines. The restaurant boasts the finest wine collection with over 200 types.

The Lounge invites guests to enjoy refreshing breakfast, gourmet lunch and exquisite dinner in elegant and relaxing atmosphere.



Premium Japanese restaurant ensuring constant commitment to excellence.

With total space of 190 sq.m. the restaurant offers 3 private dining rooms:

Ran, Kiku and Sakura



The Chef of MEGUMI restaurant is Mr. Munechika Ban is a famous master of Japanese cuisine in Russia.

The menu of the restaurant is built on classic and author's recipes. Among the iconic dishes on the menu are “Wagyu” beef , cooked and served on a hot volcanic stone from Mount Fuji and crispy “Kanzuri” shrimps in thin batter cooked in a spicy cream sauce.

The wine list contains two dozen types of sake and a collection of author's cocktails created on the basis of sparkling varieties of sake with the addition of Japanese citrus Yuzu.



BANQUET HALLS

Featuring two banquet halls Pushkin 117 m² with large windows for natural daylight and Charlotte 75 m² equipped with state-of-the-art technology Lotte Hotel St. Petersburg is the perfect venue for family celebration, wedding or business event.



ACCOMMODATION

- **Heavenly rooms: 14 rooms, 34 - 47 m²**
Mansard windows, modern style
- **Superior rooms: 48 rooms, 36 - 50 m²**
Courtyard, Antonenko lane view, modern style
- **Superior City view: 12 rooms, 39 - 53 m²**
St. Isaac square view, modern style
- **Deluxe rooms : 47 rooms, 36 - 54 m²**
Courtyard, Antonenko lane view, classical style
- **Premier rooms: 22 rooms, 40 - 54 m²**
St. Isaac square view, classical style

SUITES

- **Heavenly Suite: 1 Suite, 74 m²**
Mansard windows
- **Superior Suite: 1 Suite, 89 m²**
St. Isaac square view
- **Deluxe Suite: 2 Suites, 92 m²**
St. Isaac square view
- **Premier Suite: 2 Suites, 119 m²**
St. Isaac square view
- **Presidential Suite : 1 Suite, 216 m²**
St. Isaac square view

ROOM FEATURES :

- Complimentary Internet access
- Coffee & tea making facilities (Nespresso)
- Coffee machine
- Digital control smart panel
- Bathroom amenity (Molton Brown)
- Luxurious bathrobe, slippers
- Korean bidet toilet
- Complimentary access to the fitness center & relaxing pool

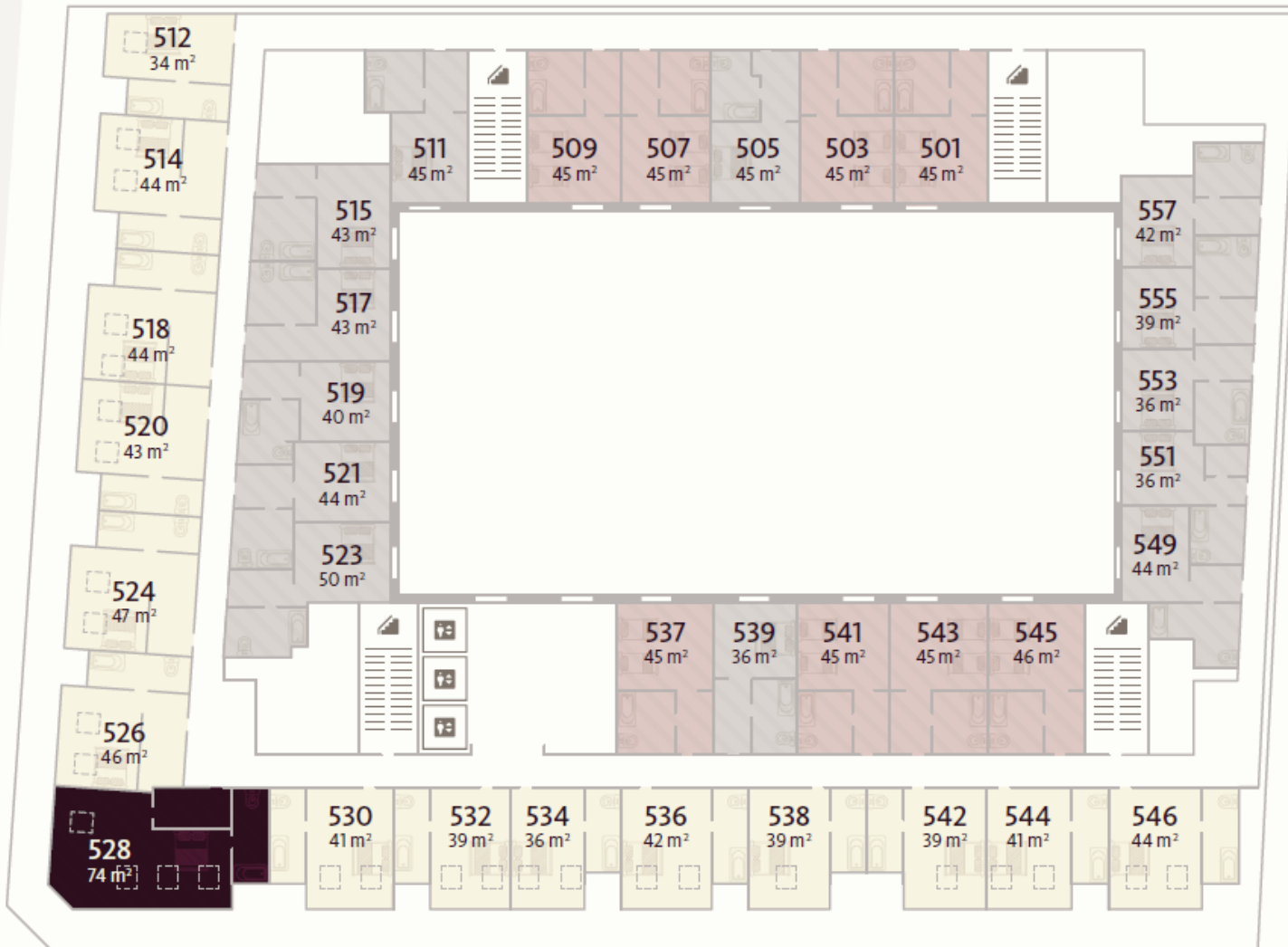
ADDITIONAL FEATURES IN THE SUITES:

- Bang & Olufsen audio system
- Bathroom amenity (BVLGARI)
- Complimentary access to the Club Lounge
- Complimentary underground parking

5th floor

Moika river embankment

Moika river



- Superior Mansard**
 14 rooms
 34-47 m²
- Superior King**
 13 rooms
 36-44 m²
- Superior Twin**
 8 rooms
 45-46 m²
- Mansard Suite**
 1 room
 74 m²

Antonenko per.

HEAVENLY ROOM



The room with mansard windows is the perfect option for the concentration and relaxation.
14 cozy rooms with skylight windows and a view of the St. Petersburg sky will be the perfect choice for travellers who value peace and comfort.

Special features:

Rooms decorated in modern style

Skylight windows

HEAVENLY SUITE

For those who cherish space, peace and smart decisions, Lotte Hotel Saint-Petersburg is happy to offer Mansard Suite situated on the 5th floor. The Suite with an area of 74 m² decorated in modern style combines sophisticated interior design, modern technical trends and a relaxing atmosphere. The suite is divided into a bedroom and a living room

Special features:

- Room decorated in modern style
- Size – 74 m²
- Skylight windows

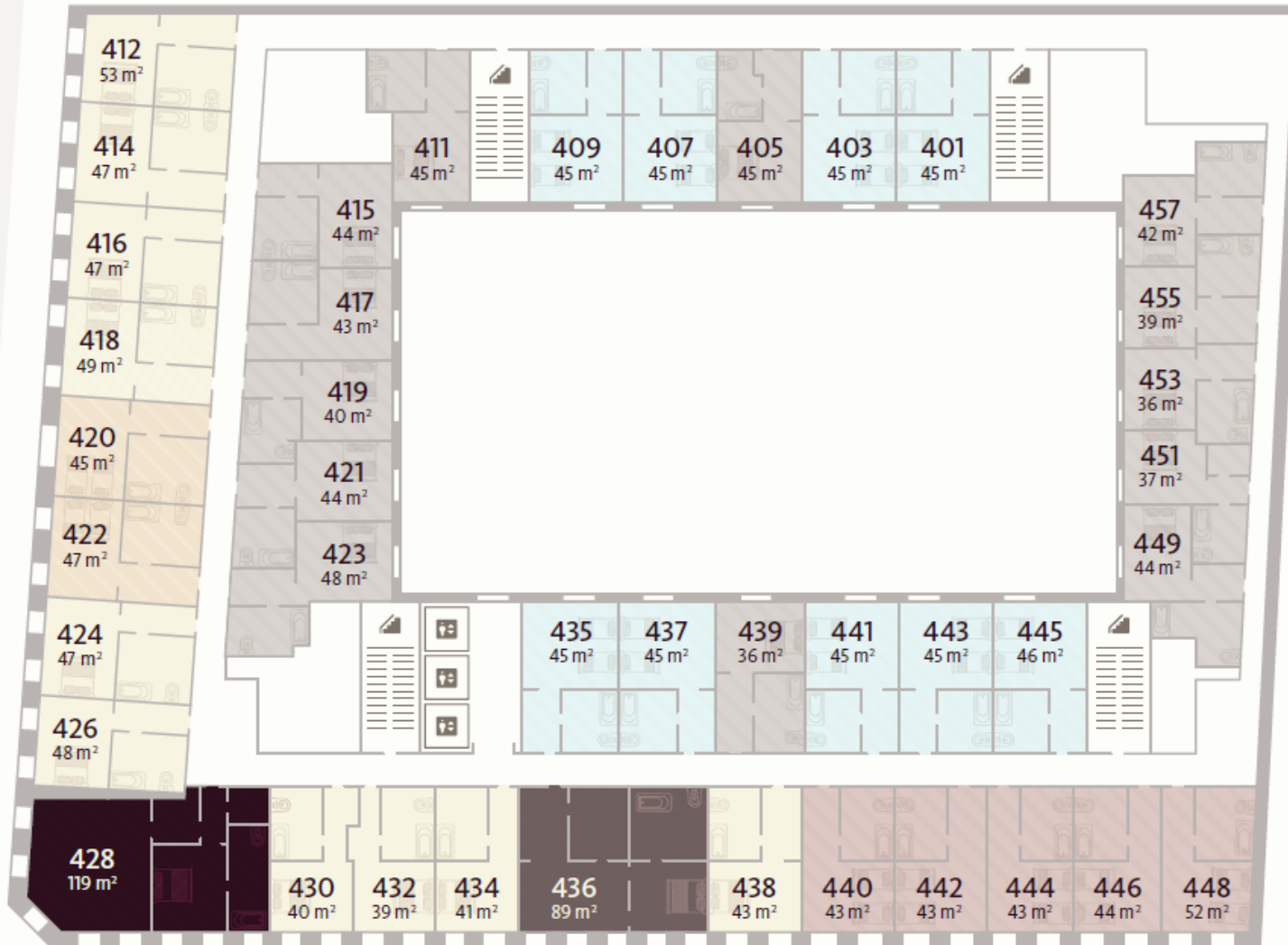


4th floor

ST. PETERSBURG

Moika river embankment

Moika river



Antonenko per.

Saint Isaac's Square

- Superior King View**
 10 rooms
 39–53 m²
- Superior Hollywood Twin View**
 2 rooms
 45–47 m²
- Superior King**
 13 rooms
 36–44 m²
- Superior Hollywood Twin**
 5 rooms
 43–52 m²
- Superior Twin**
 9 rooms
 45 m²
- Premier Suite**
 1 room
 119 m²
- Superior Suite**
 1 room
 89 m²

SUPERIOR ROOM



For travellers looking for smart decisions and calm atmosphere, our Superior room category will be a perfect choice.

Decorated in modern style with view into the courtyard and Antonenko lane, these rooms are a practical option for business trips and holidays.

Special features:

- Rooms decorated in modern style
- View into the courtyard/ Antonenko lane



SUPERIOR CITY VIEW ROOM



For trend-watchers and admirers of modern style, Lotte Hotel is happy to offer Superior City View rooms situated on the 4th floor.

A unique combination of modern interior and a magnificent view of historical center of Saint-Petersburg is a sure heart-mover.

Special features:

- Rooms decorated in modern style
- Panoramic view on St. Isaac's Square / Moika River

SUPERIOR SUITE # 436



Superior Suite with an area of 89 sq. m. situated on the 4th floor, will be a perfect choice for admirers of space and comfort.

This Suite is designed in modern style and is divided into a bedroom with a comfortable bed and a living room . By choosing Superior Suite, you also get a complimentary access to all Club Lounge facilities.

Special features:

- Room decorated in modern style
- Size – 89 m2
- View on the Mariinsky Palace and St.Isaac's square



PREMIER SUITE # 428



Premier Suite # 428 decorated in modern style is located on the 4th floor. The Suite is divided into a bedroom with a comfortable bed and a living room. The main advantage of this Suite is its marvelous panoramic view of the St. Isaac's Square.

Special Features:

- Rooms decorated in modern style
- Area: 119 m2
- Panoramic view of the Mariinsky Palace, St. Isaac's Square and Moika River

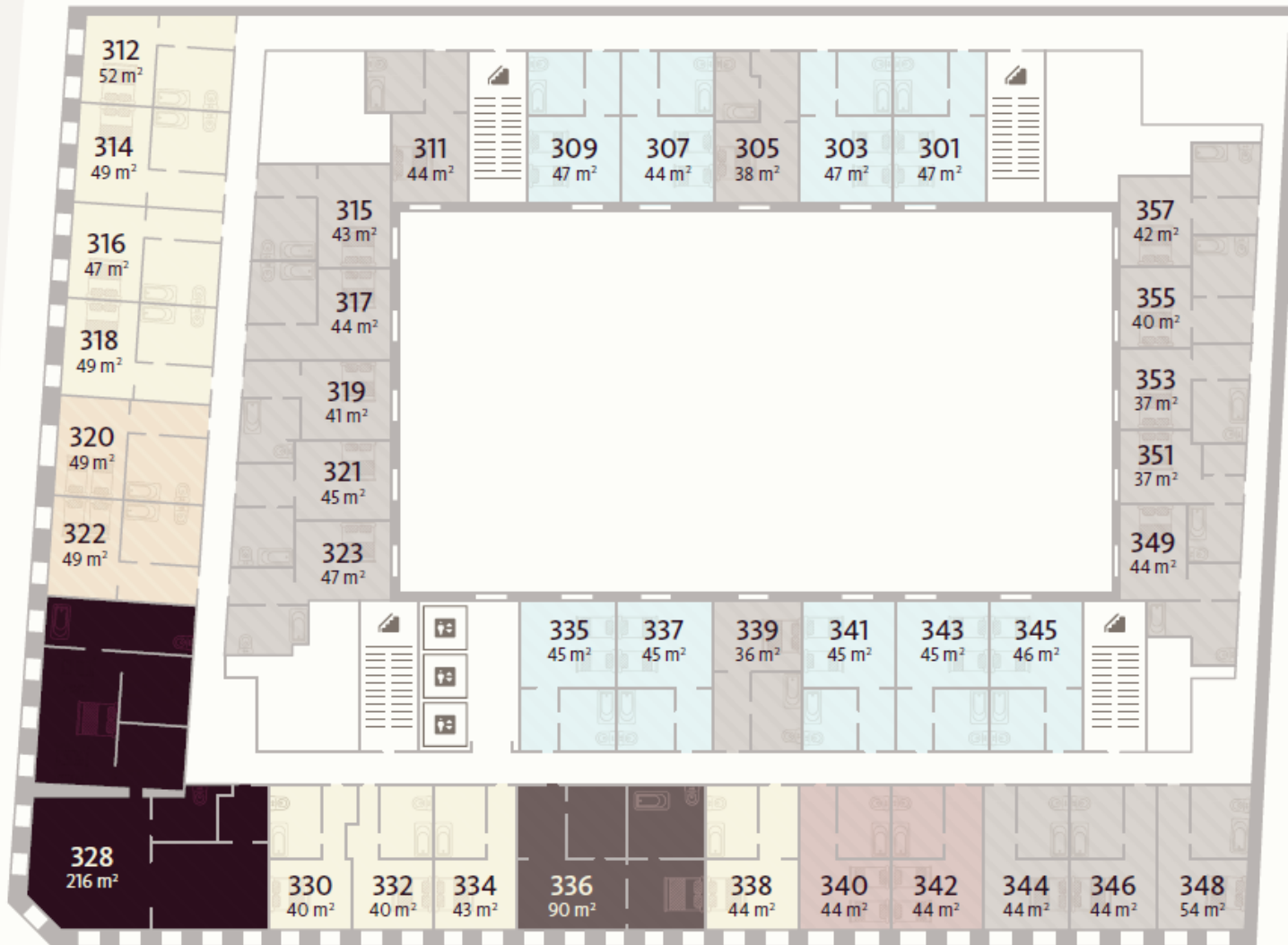


3rd floor

ST. PETERSBURG

Moika river embankment

Moika river



Antonenko per.

- 
Premier King
 8 rooms
 40–52 m²
- 
Premier Hollywood Twin
 2 rooms
 49 m²
- 
Deluxe King
 16 rooms
 36–54 m²
- 
Deluxe Hollywood Twin
 2 rooms
 44 m²
- 
Deluxe Twin
 9 rooms
 44–47 m²
- 
Presidential Suite
 1 room
 216 m²
- 
Deluxe suite
 1 room
 90 m²

DELUXE ROOM



Admirers of traditional style will definitely appreciate rooms situated at 2nd and 3rd floors. High ceiling, classical interior and a cozy view of the courtyard and Antonenko lane create the atmosphere of tranquility and peace.

The Deluxe category is a combination of exquisite classical style, the latest technical trends and a calm atmosphere.

Special features:

- Rooms decorated in classical style
- Ceiling height – up to 3.9 m
- View into the courtyard / on Antonenko lane



PREMIER ROOM



Admirers of traditional style will definitely appreciate rooms on the 2nd and 3rd floors.

Amazing panoramic views of Moika River and St. Isaac's Square in combination with classical interior evoke the tsarist atmosphere of old St. Petersburg and put you into romantic mood.

The mixture of sophisticated classical style with the latest technical trends is a sure heart-mover.

Special features:

- Rooms decorated in classical style
- Ceiling height – up to 3.9 m
- Panoramic view on the St. Isaac's Square / Moika River



PRESIDENTIAL SUITE

The Presidential Suite is 216 m² of beauty and luxury. We put our soul and love for our guests into this biggest and the most marvelous suite of the whole Hotel.

The suite is equipped with everything you need for a comfortable stay. Besides the king-size bedroom, you will find a living room, as well as a dining room for 10 guests.

Only exclusive natural materials were used in decoration. Bathrooms are covered with natural Italian red marble. The main advantage of Presidential Suite, though, is definitely the majestic view on Moika River and St. Isaac's Square.

Special Features:

- Room decorated in classical style
- Area: 216 m²
- Panoramic view on the St. Isaac's Square / Moika River

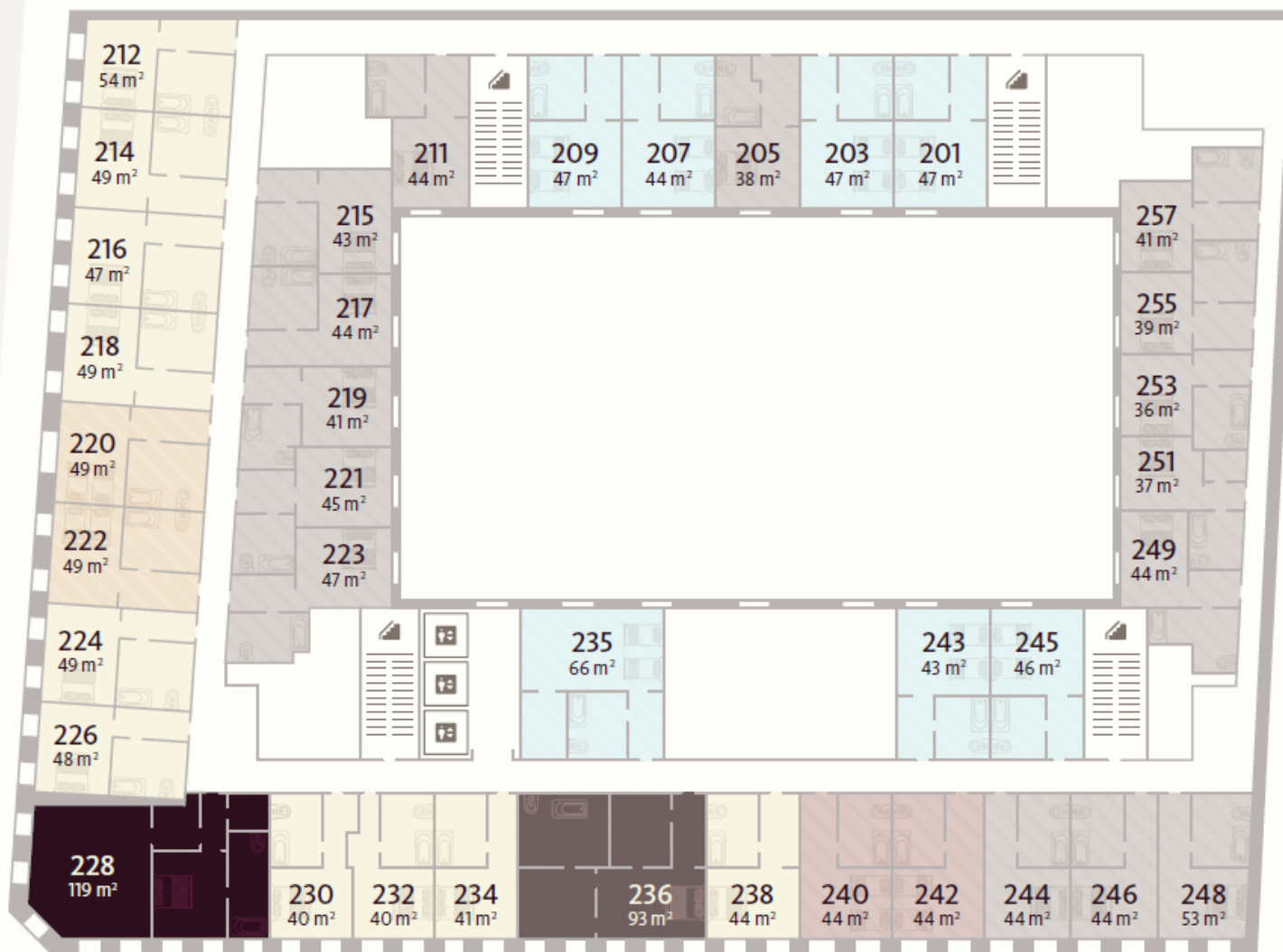


2nd floor

ST. PETERSBURG

Moika river embankment

Moika river



Antonenko per.

- 
Premier King
 10 rooms
 40–54 m²
- 
Premier Hollywood Twin
 2 rooms
 49 m²
- 
Deluxe King
 15 rooms
 36–53 m²
- 
Deluxe Hollywood Twin
 2 rooms
 44 m²
- 
Deluxe Twin
 7 rooms
 43–66 m²
- 
Premier Suite
 1 room
 119 m²
- 
Deluxe suite
 1 room
 93 m²

PREMIER SUITE # 228

Premier Suite located on the 2nd floor is divided into a bedroom with a comfortable bed and a living room. Without any doubts, main advantage of this room category is its marvelous view on the St. Isaac's Square.

Special Features:

- Rooms decorated in classical style
- Area: 119 m2
- Panoramic view on the St. Isaac's Square / Moika River



DELUXE SUITE

2 spacious Deluxe Suites are situated on the 2nd and 3rd floors. Only exclusive natural materials were used in decoration. Bathrooms are covered with natural Italian black and white marble.

The mixture of sophisticated classical style with the latest technical trends is a sure heart-mover.

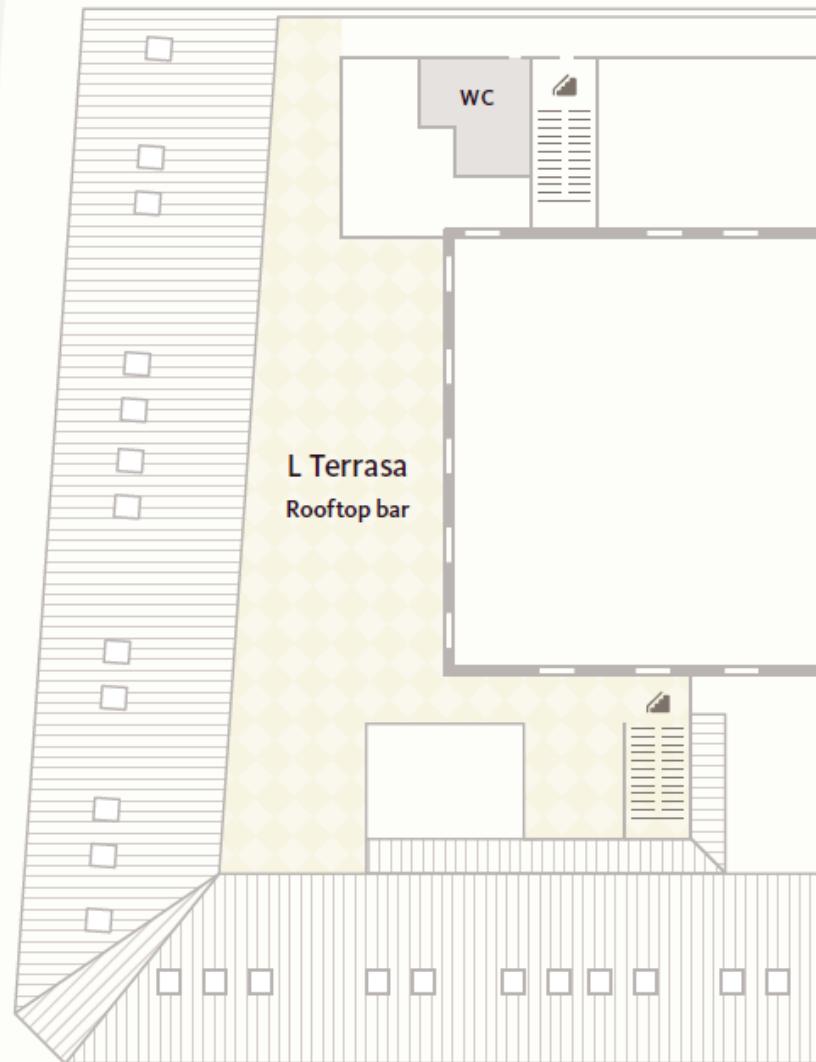
Special Features:

- Room decorated in classical style
- Area: 90 ~ 93 m2
- View of the St. Isaac's square



6th floor

L Terrasa
Rooftop bar
Area: 373 m²



Moika river

Moika river embankment

L Terrasa
Rooftop bar

WC

Antonenko per.

Saint Isaac's
Square

L TERRASA

LOTTE
HOTELS & RESORTS



Dive into the atmosphere of white nights and enjoy the legendary view of St. Petersburg at the open bar L Terrasa, located on the roof top. During summer months here you can enjoy marvelous view on the historical center of the Northern Venice. Wide range of snacks and cocktails are at your disposal.

Magnificent view, unique cocktails and fascinating atmosphere of White Nights – this is all you really need to feel the taste for life.



-1st floor



Mandara Spa
100 m²

Fitness center
104 m²

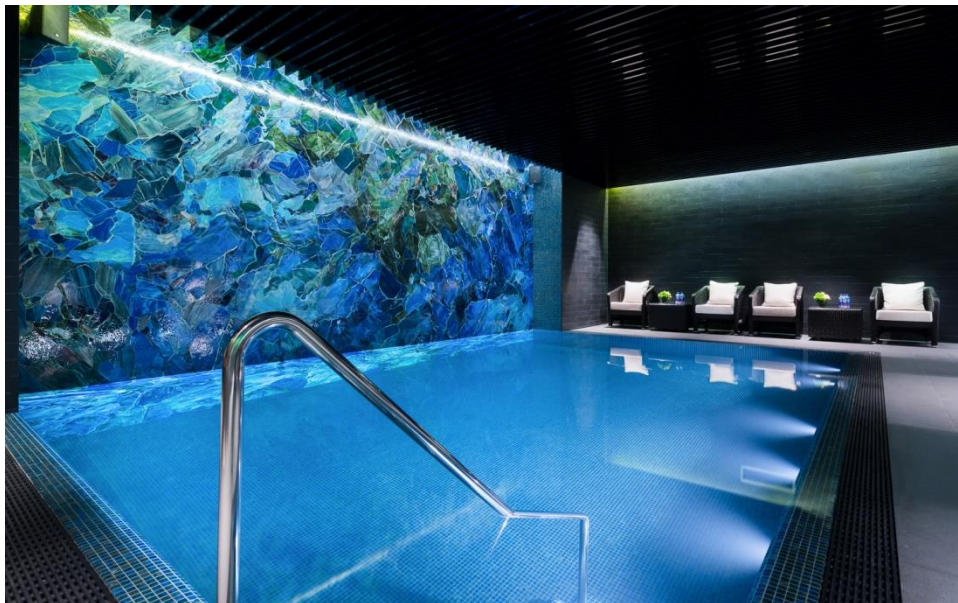
Moika river

Moika river embankment

Antonenko per.

Saint Isaac's
Square

MANDARA SPA



- Highly qualified specialists from Bali, owns the secrets of Asian medicine, ancient techniques and practicing unique philosophy of beauty.
- International cosmetic line: English Elemis and Balinese Mandara.
- Signature treatments from Mandara Spa – traditional Balinese 4 hands massage with oxygen therapy and mineral bath with color therapy.

MANDARA SPA in Moscow, named the best SPA of Luxury hotel by World Luxury SPA Awards

Special features:

- Size – 280 m²
- 4 treatment rooms
- 2 saunas
- Relaxing pool



FITNESS HALL

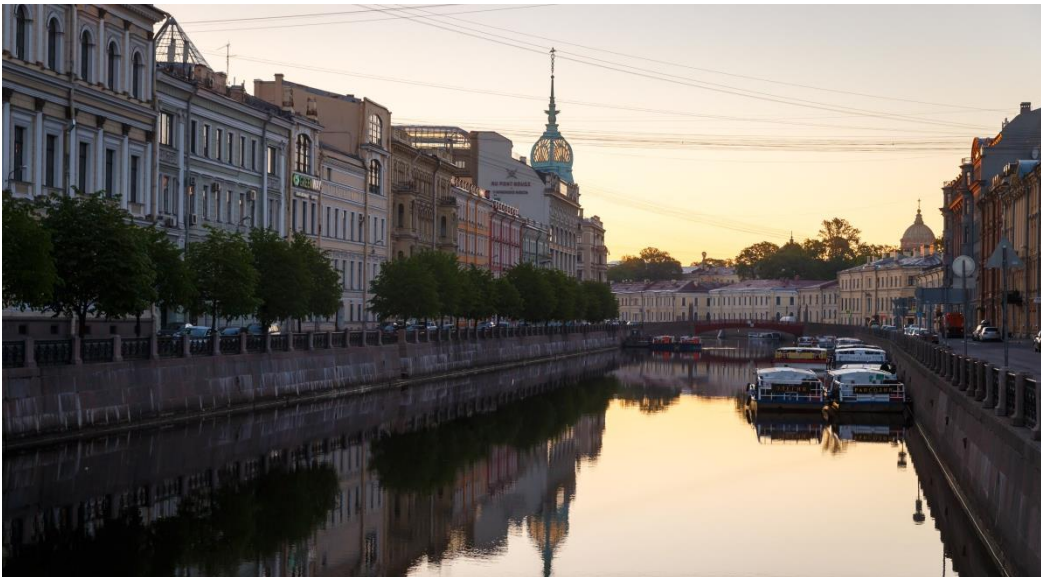
At our fitness hall you can recharge your batteries for future discoveries or just take the edge off. Fitness equipment of well-known Italian brand Technogym, as well as attentive attitude of professional instructors, will help you reach your goals and fill your life with energy.

Special features:

- Size – 104 m²
- 18 equipment items of Italian brand Technogym
- Molton Brown bath amenities



LOCATION and ATTRACTIONS



Airport

Pulkovo Airport – 21 km / 45 min by car

Subway

Admiralteiskaya (the 5th line) – 800 m, a 10-minute walk

Sennaya Ploshad – (the 2nd line) - 1 km, a 12-minute walk

Gostiny Dvor – (the 3rd line) – 1,9 km, 8 min by car

Nearest train station

Moskovsky Railway Station – 4 km / 15 min by car

Sightseeing

St. Isaac's Square – 0 km

Hermitage Museum – 1,6 km, a 10-minute walk

Nevsky prospect – 800 m, a 5-minute walk

Peter and Paul Fortress – 3 km

Youssouпов Palace – 800 m, a 5-minute walk

Mariinsky Theatre – 1,3 km, a 10-minute walk

Nearby shopping facilities

Gostiny Dvor – 1,7 km, a 10-minute walk

Galeria – 4 km / 15 min by car

Au pont Rouge – 400 m, a 5-minute walk

DLT – 1,2 km, a 10-minute walk

LOCATION and ATTRACTIONS

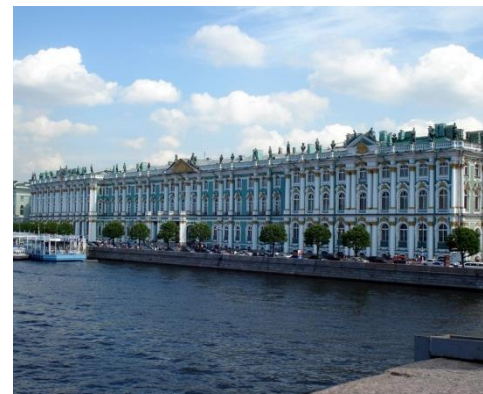
Location in the historical part of the city on the St. Isaac's Square next to the Mariinsky Palace built for the daughter of Nikolai, 1st - Maria.

St. Petersburg with numerous rivers and channels is known as the "Venice of the North". The Blue bridge on the Moika embankment in front of the hotel is the largest one in the city – 97 meters.

St. Isaac cathedral is famous for the rich decoration with malachite columns and 14 varieties of marble.

The equestrian statue of Nikolai 1st in front of the hotel is technically curious: only 2 footholds of the horse.

Lotte Hotel St. Petersburg is located 10 minutes walking distance from the main street of the city Nevsky prospect and the famous Mariinsky theatre.



LOTTE HOTELS & RESORTS

LOTTE
HOTELS & RESORTS

Chain Lotte Hotels&Resorts includes 21 hotels in South Korea, Russia, Vietnam, Uzbekistan and USA



Contacts

Anna Vozniak

Director of Sales and Marketing
Lotte Hotel St. Petersburg

Email: avozniak@lottehotel.ru

Mob: +7 921 958 68 25

Natalia Panasyuk

Assistant Director of Sales and Marketing
Lotte Hotel St. Petersburg

Email: npanasyuk@lottehotel.ru

Mob: +7 911 7617328

Viktor Kustov

Corporate Sales Manager
Lotte Hotel St. Petersburg

Email: vkustov@lottehotel.ru

Mob: +7 906 229 17 71

Marina Kochergina

Meeting Sales Executive
Lotte Hotel St. Petersburg

Email: mkochergina@lottehotel.ru

Mob: +7 967 977 35 34

Elizaveta Lozinskaya

Leisure Sales Manager
Lotte Hotel St. Petersburg

Email: elozinskaya@lottehotel.ru

Mob: +7 967 977 30 93



Lotte Hotel St.Petersburg

Antonenko lane, 2, St.Petersburg, 190000, Russia

T +7 812 336 10 00 **F** +7 812 244 09 38 www.lottehotel.ru